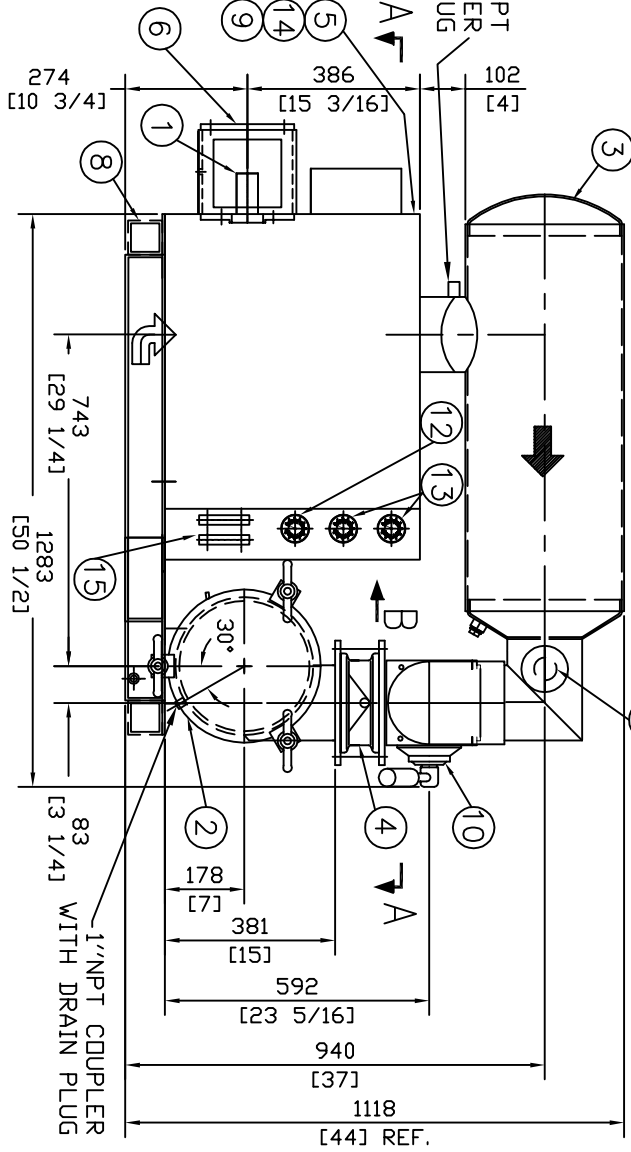
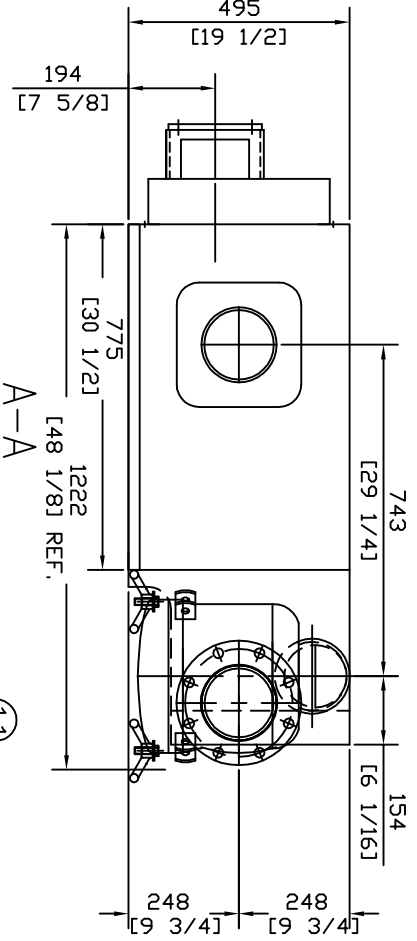
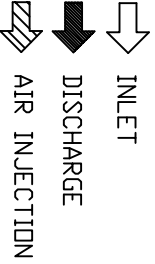
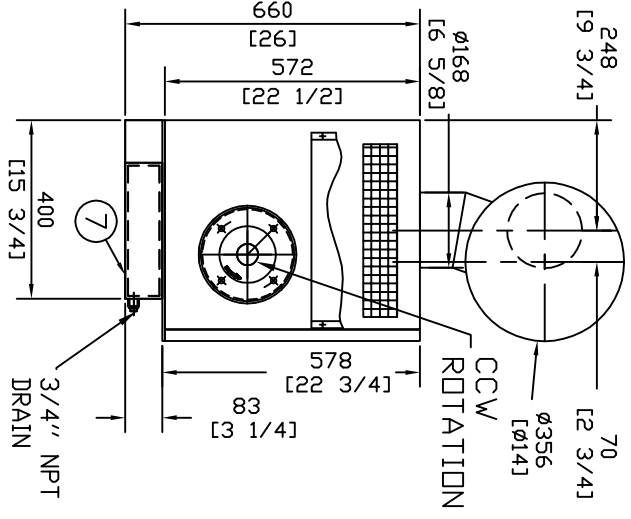


BILL OF MATERIALS		WEIGHT Lbs/Kg
1	RB-DV65/V MANIFOLD (SP)	462/210
2	INLET FILTER - 6"	55 / 25
3	DISCHARGE SILENCER - Ø14x39x6	242 / 110
4	CHECK VALVE-6"-Serie 518, EPDM	50 / 22.8
5	GRUVLOK TYPE VITALIC-6"(INSIDE)	11.8 / 5.4
6	HYDRAULIC ADAPTOR	-
7	INLET AIR CONDUT	155 / 70
8	SUPPORT HSS3X3X1/4	BY CUSTOMER
9	ACOUSTICAL ENCLOSURE	140/64
10	4-WAY VALVE AND PIPING ASS'Y	72 / 33
11	RELIEF VALVE 2" -0496-87	8.4 / 3.81
-	SET 15 PSIG	
12	PRESSURE GAUGE	0.66/0.3
13	VACUUM GAUGE	0.66/0.3
14	SPOOL D.N.6" - 4"Lg.(INSIDE)	14 / 6.5
15	OIL LEVELS & WINDOWS	0.44 / 0.2



P1 - OUTLET PRESSURE
 V1 - INLET VACUUM
 V2 - VACUUM BEFORE FILTER

PROPRIETARY NOTICE
 THIS DRAWING AND ALL THE INFORMATION THEREON IS THE PROPERTY OF "SURPRESSEUR 4S"
 THIS DRAWING IS NOT TO BE COPIED OR USED FOR ANY PURPOSE EXCEPT BY WRITTEN CONSENT OF "SURPRESSEUR 4S"

Surpresseur 4S

108, rue BEAUVAIS, DELSON (QUEBEC), J5B 1W8
 TEL: (450) 638-9563, FAX: (450) 638-9562

TITLE: GENERAL ARRANGEMENT / RBDV-65

CUSTOMER:	-	PROJECT #:	-
DRAWN BY:	V.B.	CHECKED BY:	D.L.
SCALE:	REF. -	DATE:	7.10.2010
SHEET #:	1/1	DRAWING #:	DLDV_65_CCW_6_cr_ho
REV.	2		